



**BLT**

**Bluetooth Location Tracking**  
Tracking Service for assets on-premises

Automotive & Cargo





# Hello!



We are itemlost. The quickest way to recover your valuable items. We live and work every day to help make this product completely accessible around the world. We believe in the simple yet profoundly impactful value our products bring to people's lives. We are highly motivated to add as much value as possible and to grow and expand our business in any industry that is ready.

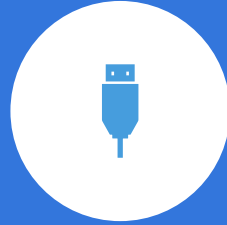
Our Blue Tooth Location (BLT) Service solution originated based on our itemlost principles as we became aware of the urgent need to track items on site.

**Gino de Vin en Marco Gons**

Partners of itemlost







## Connecting

We connect businesses with their assets. Our Service provides optimal updates of the assets data, allowing for specific queries to be done as a whole, per asset or per subset.



## Accessible

We make this connection accessible worldwide through a cloud based, easy-to-use and privacy-guaranteed solution. No app needed.

# Mission

Our mission is to reconnect people with their assets (cars) in the quickest, easiest and most secure way.

# Did you know that

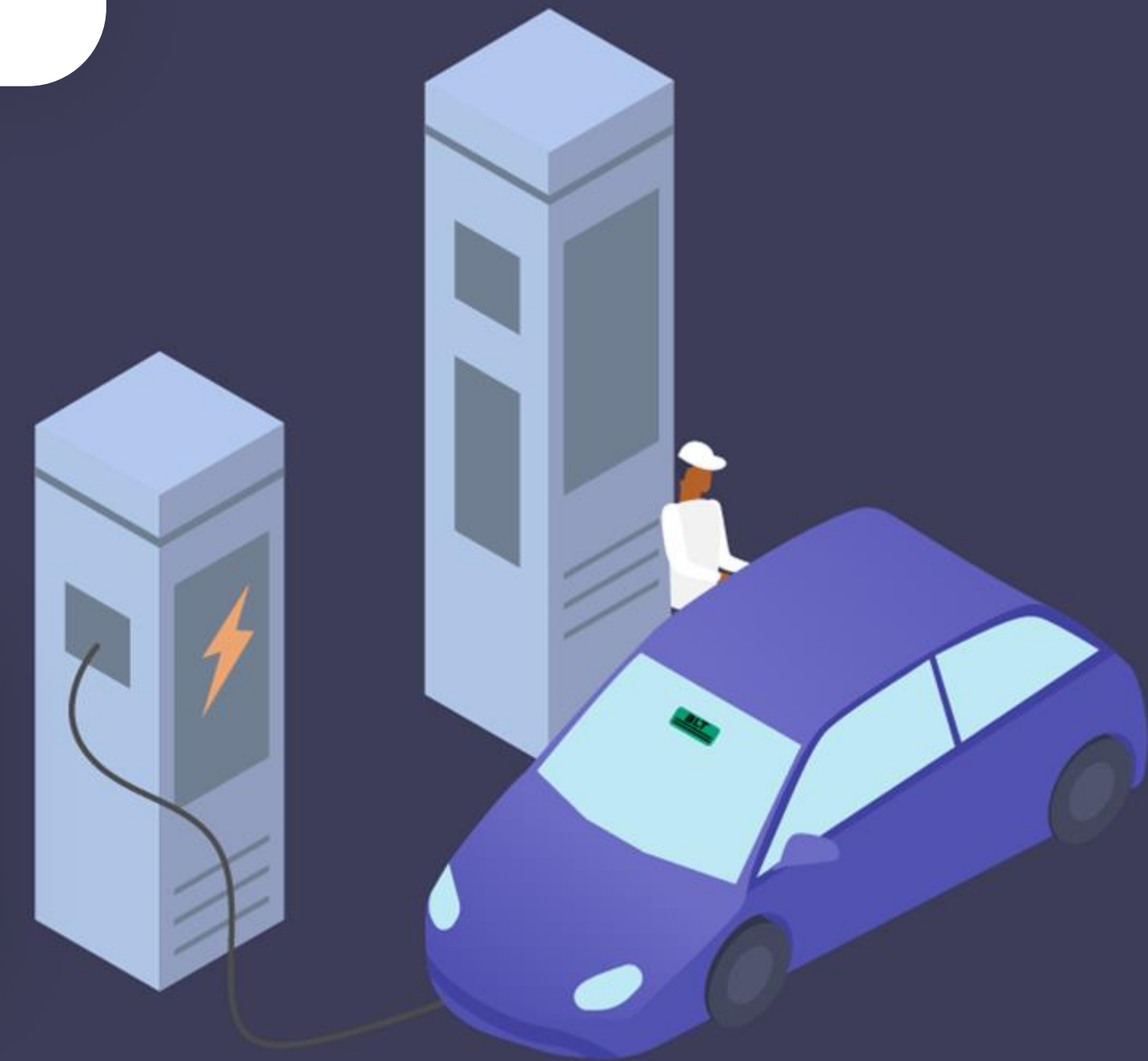
An urgent need for on site tracking of for example cars exists. They get 'lost' internally occasionally, the batteries of cars die as they are not recharged in time, demo cars are used for trips that are not always registered etc.

What about your cars?

**X**  
car batteries die  
Per location p/y?

**waste**  
of time, energy and money

**'lost'**  
cars for days







# In your industry these are the facts



**X**

Incorrect trip records  
from demo cars

**X**

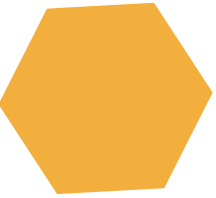
Costs due to inefficient  
placement of car on site

**X**

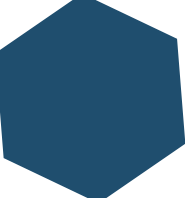
costs to replace the battery

**X**

costs of 'searching' for the car



How do these X-numbers impact your business? And therefore  
the brand? What is the impact if these numbers can be reduced?





# Lost assets result in 'lost business'



Additional costs



Waste of time & energy



Frustration

Lost items result in "lost business" due to frustrated employees, wasted time and energy spent searching, and high costs from idle vehicles. How would you like it if a car battery broke down or interested customers had to wait because you had to search the car internally?

Explore your own location data and find out that our BLT Solution creates many opportunities to save unnecessary costs.



# The benefits

Our product provides direct and indirect valuable benefits to your business.



## Employee satisfaction

Employees can quickly and easily find the relevant car on location.



## Data driven

Access and use personal and valuable data through the BLT dashboard where many queries can be pulled.



## Stand alone solution

BLT works perfectly alongside your existing (backend) systems. No back end integration needed.



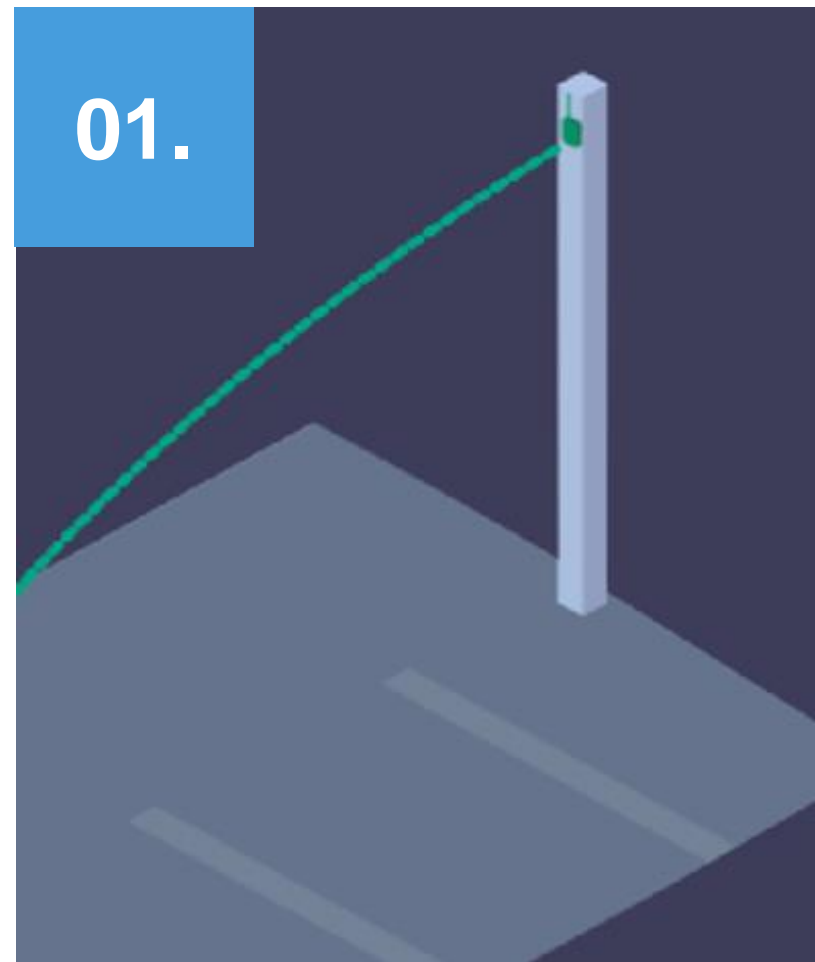
## Insurance advantages

Export live data which can also be used for insurance purposes. AVG proof as tracking stops when the car leaves your premises.





# How does it work?



## Step 1

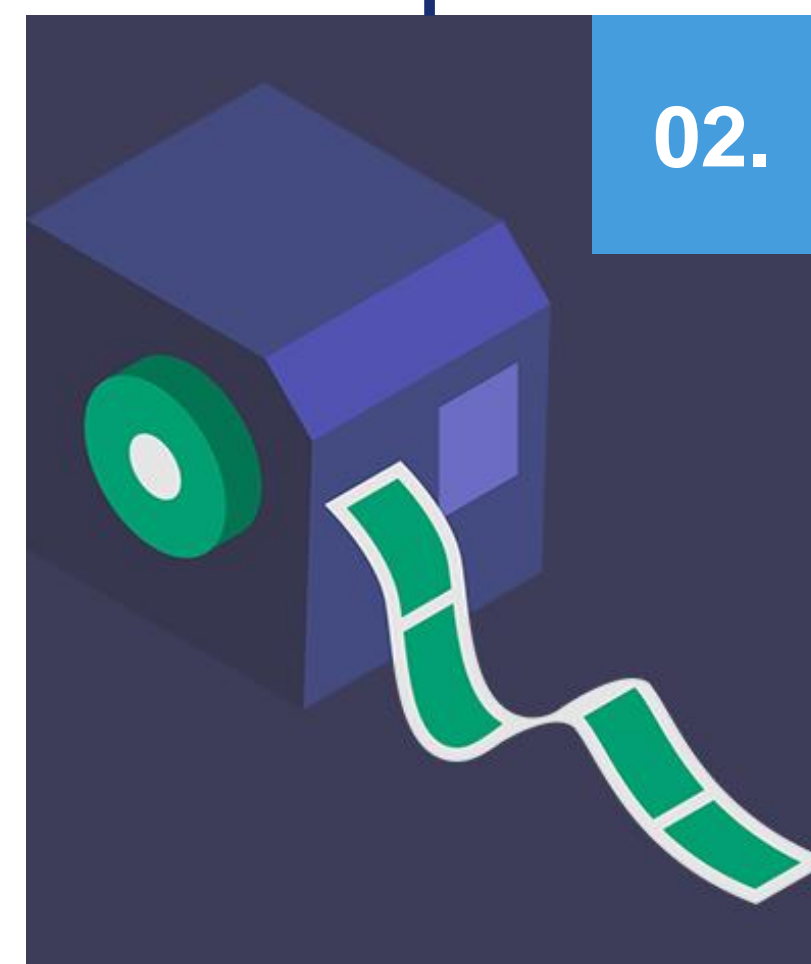
### Install gateways

The gateways are positioned at various strategic points on your premises.

## Step 2

### Install printer

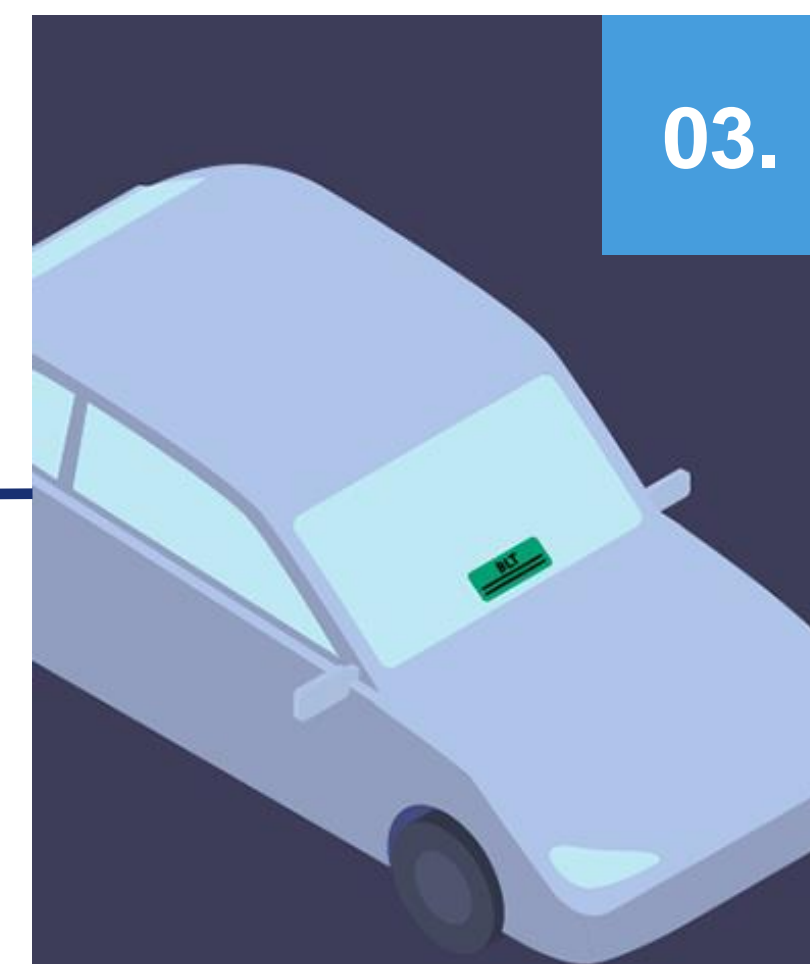
The thermal printer prints Bluetooth labels with a 18 months battery. These are in constant contact with the gateways



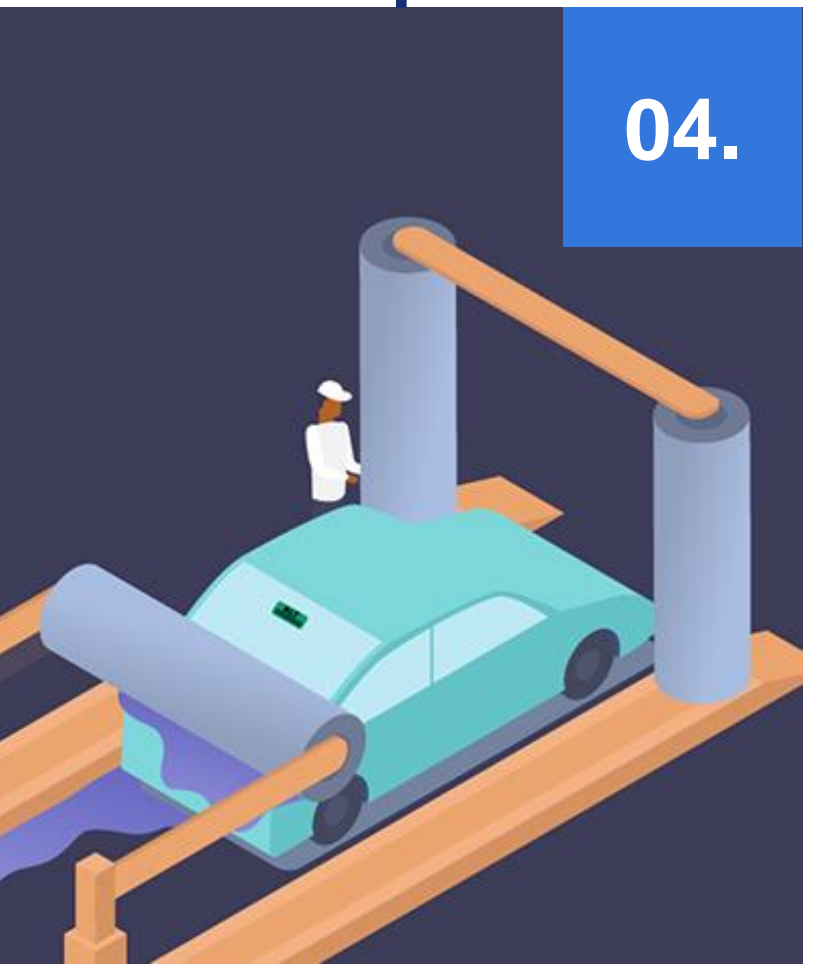
## Step 3

### Tag the cars

The cars are linked and the dashboard shows the VIN number, License plate nr, type and model and more.



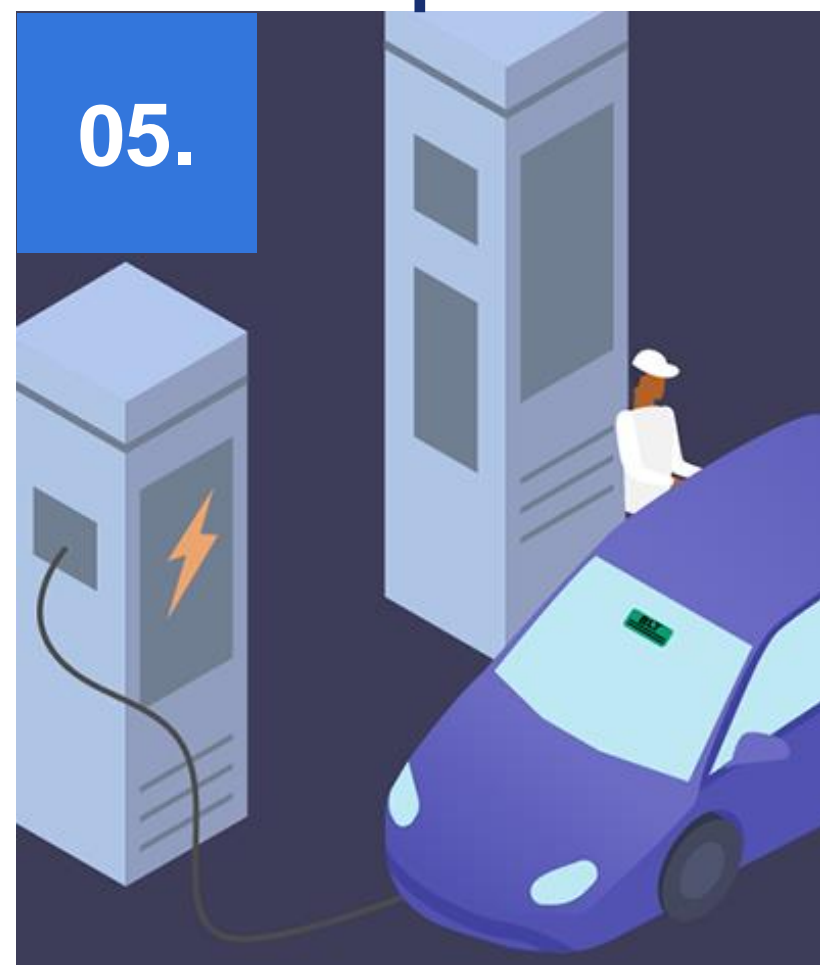




# Step 4

## Creating zones within your location

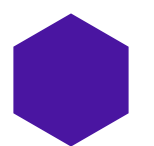
Using the gateways, zones are created so you know where each car is and has been.



# Step 5

## Receive notifications

Get notifications in time so you know which car needs maintenance.



# Step 6

## Use the frontend

To pull customized data queries and gain tons of insights.





# What you can see in your dashboard

The necessary Bluetooth labels are created and attached to newly arrived cars. The car appears on your Dashboard.

- **Location of the cars**

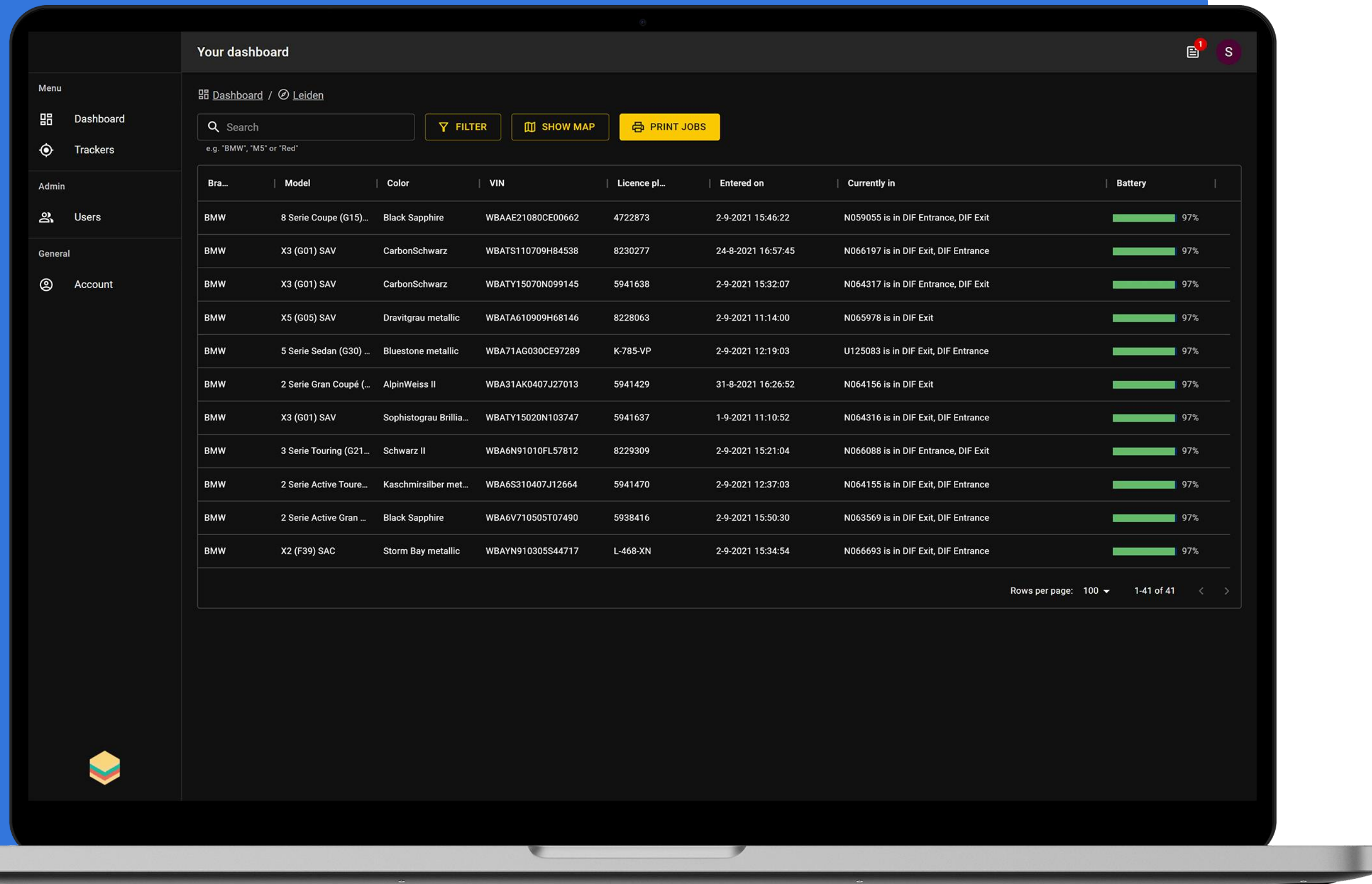
An overview of the location of the car, the number of cars registered, entry and exist times and much more.

- **Messages from the labels**

A direct messaging feature that allows the label to provide updates to the administrators behind the dashboard so that action can be taken.







# And more

- **Be connected anytime, anywhere!**

You will have 24/7 access to a realtime overview of and insight into when and where assets have been registered and where they have been.

- **Keep an eye out on your locations**

Centralize the overview of your branches and use the additional knowledge to your advantage in many ways.



# Are you next?

We are looking forward to making you happy.

[Get in touch](#)

Proud Sponsor of Olympic qualifier 3x3 NL!



**BLT**